

Paper Reference(s) 1BI0/1F
Pearson Edexcel Level 1/Level 2 GCSE
(9–1)

Biology
Paper 1
Foundation tier

Diagram Booklet

In the boxes below, write your name, centre number and candidate number.

Surname					
Other names					
Centre Number					
Candidate Number					

INSTRUCTIONS

There may be spare copies of some diagrams in case you need them.

**THIS DIAGRAM BOOKLET MUST BE
RETURNED WITH THE QUESTION PAPER
AT THE END OF THE EXAMINATION.**

Contents

Page

5	Question 1(b)
6	Question 1(b) (Spare copy)
7	Question 1(c)
8	Question 1(c) (Spare copy)
9	Question 2(a)
10	Question 3(b)
11	Question 3(c)
12	Question 4(b)
13	Question 4(c)
14	Question 5(a)
15	Question 5(b)
16	Question 5(d)
17	Question 6(a)

(continued on the next page)

Contents continued.

- 18 Question 6(b)(i)**
- 19 Question 6(b)(ii)**
- 20 Question 6(b)(ii) (Spare copy)**
- 21 Question 7**
- 22 Question 7(b)(ii)**
- 23 Question 8(b)**
- 24 Question 8(b) (Spare copy)**
- 25 Question 9(a)**
- 26 Question 10(a)**
- 27 Question 10(b)(ii)**

Question 1(b)

disease

**main way the
disease is spread**

cholera

• **in the air**

• **by animal vectors**

• **in body fluids**

malaria

• **by a vaccination**

• **in water**

Question 1(b)

disease

main way the
disease is spread

cholera

• in the air

• by animal vectors

• in body fluids

malaria

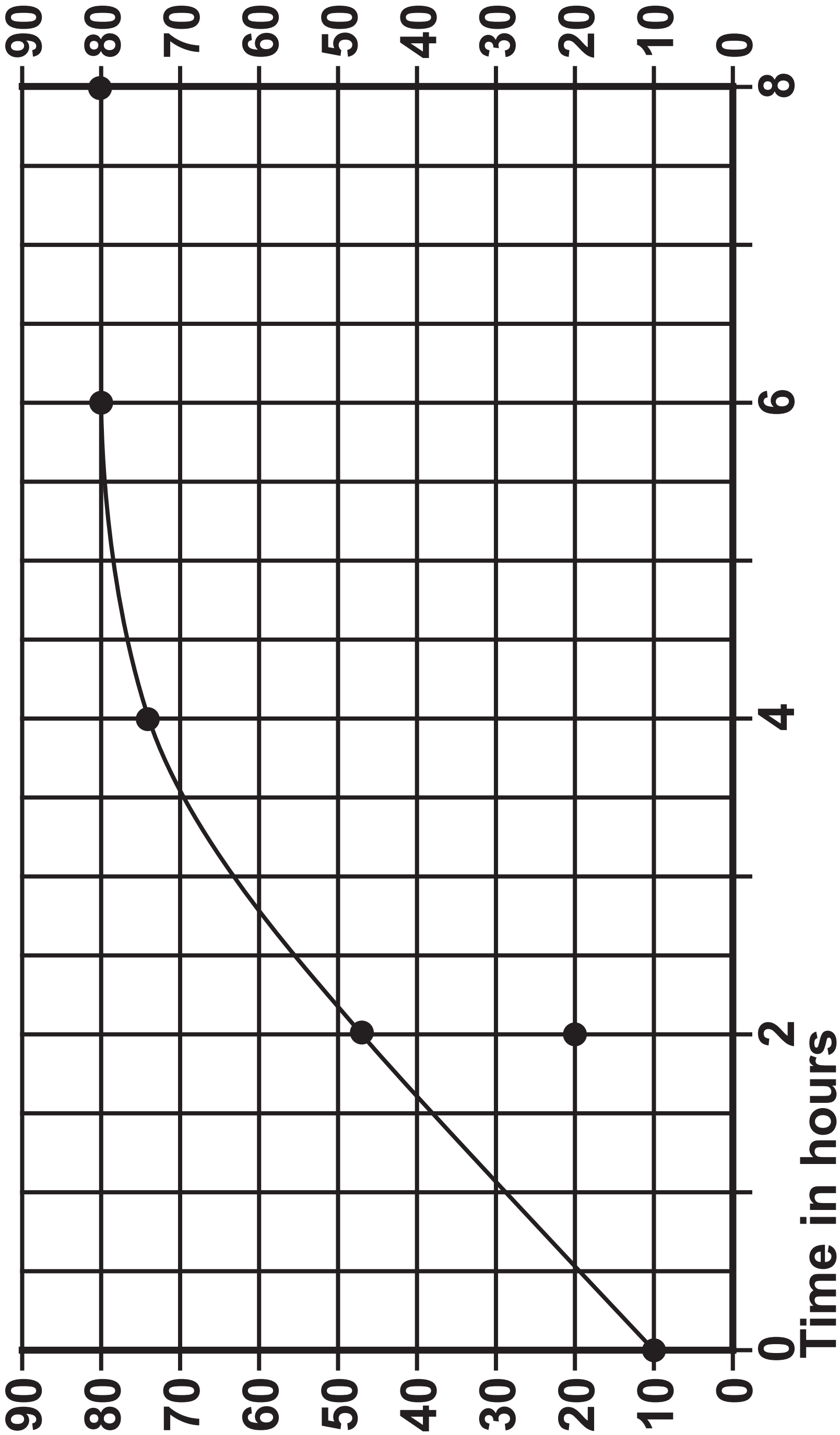
• by a vaccination

• in water

Question 1(c)
FIGURE 2

Key: ●— results at 20 °C

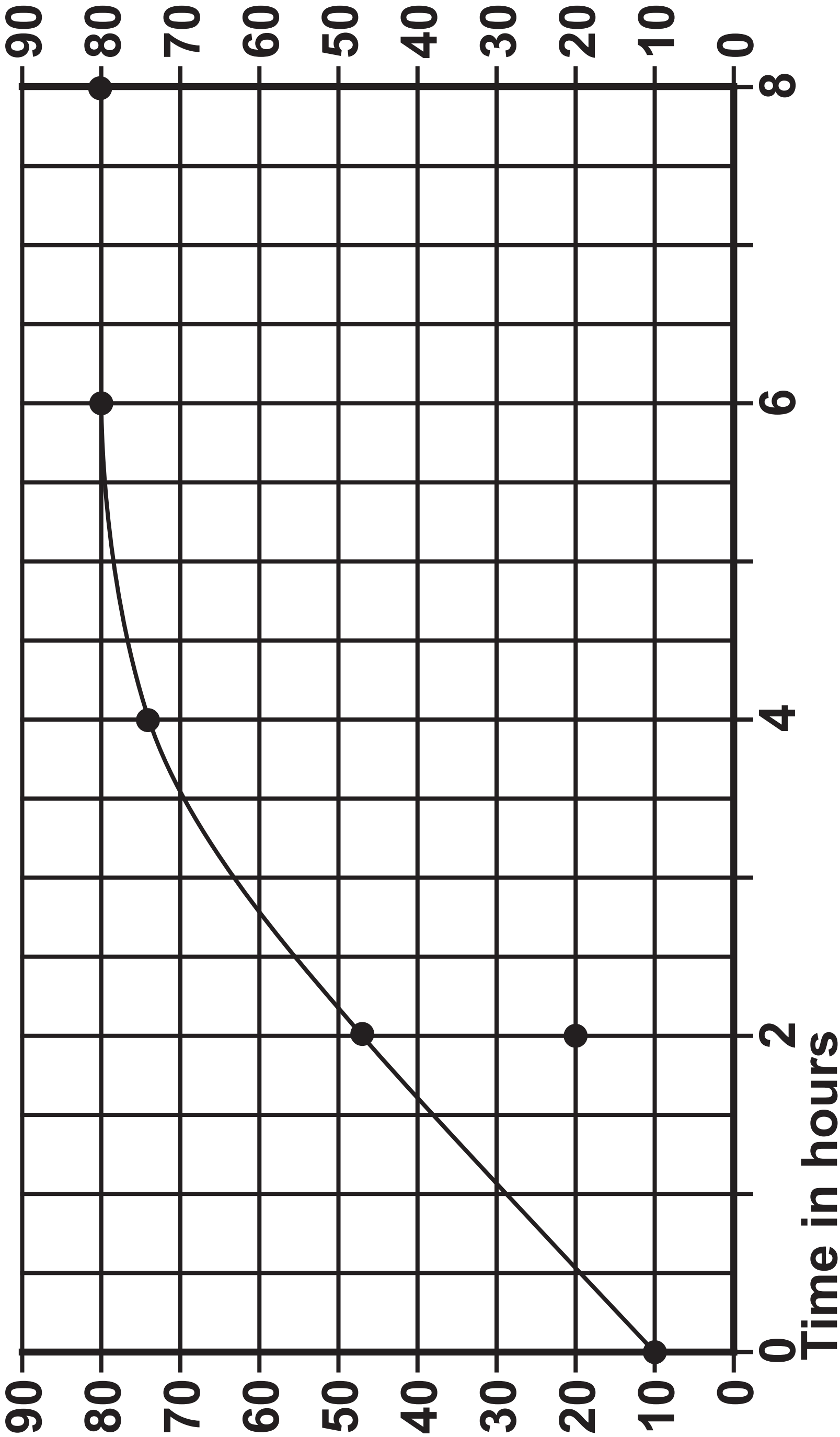
Number of bacteria in thousands

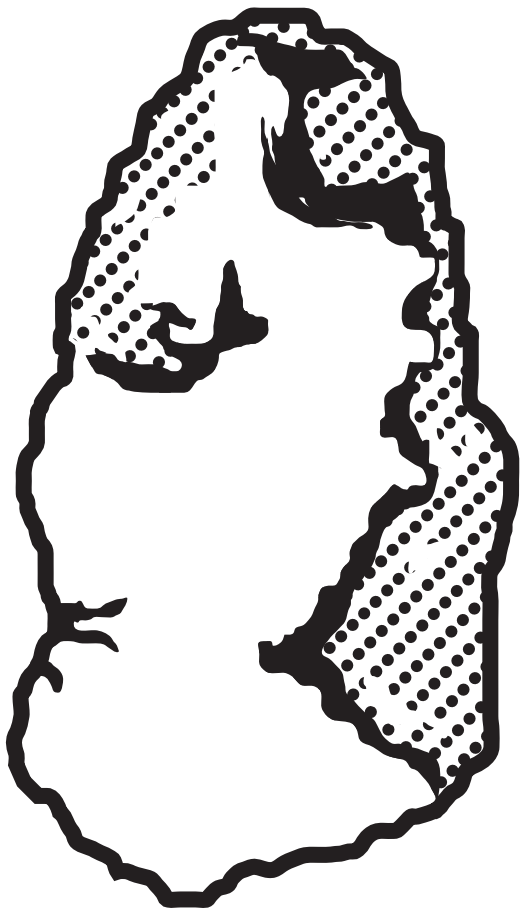
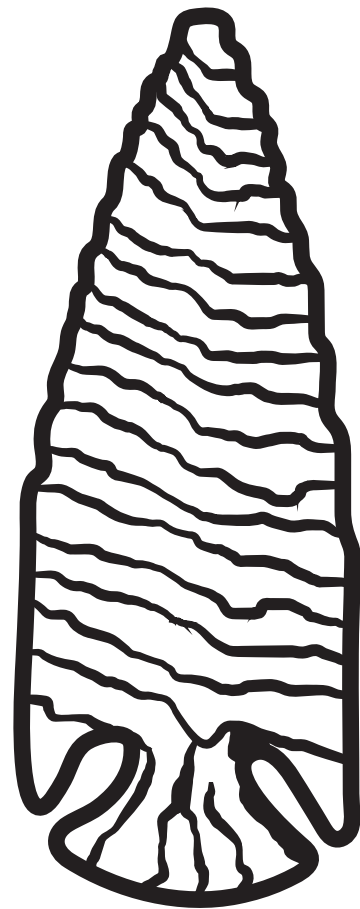


Question 1(c)
FIGURE 2

Key: ●— results at 20 °C

Number of bacteria in thousands



Question 2(a)**FIGURE 3****Tool P****FIGURE 4****Tool Q**

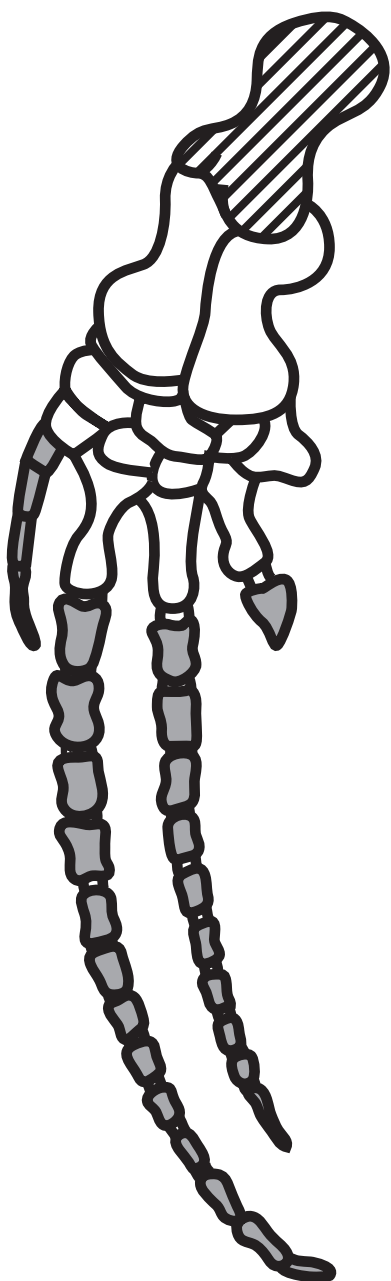
Question 3(b)

FIGURE 5

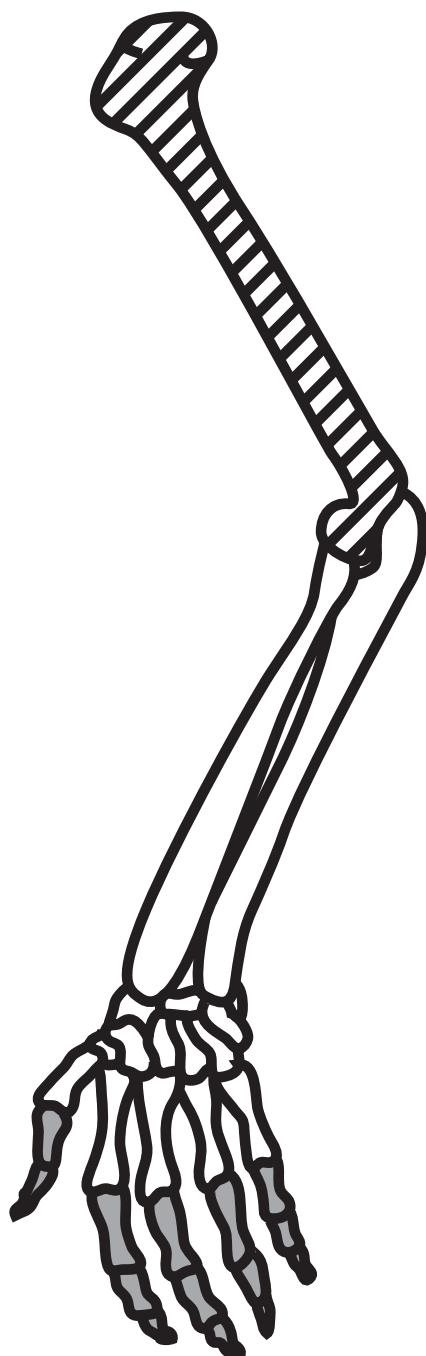
Key

-  humerus
-  phalanges

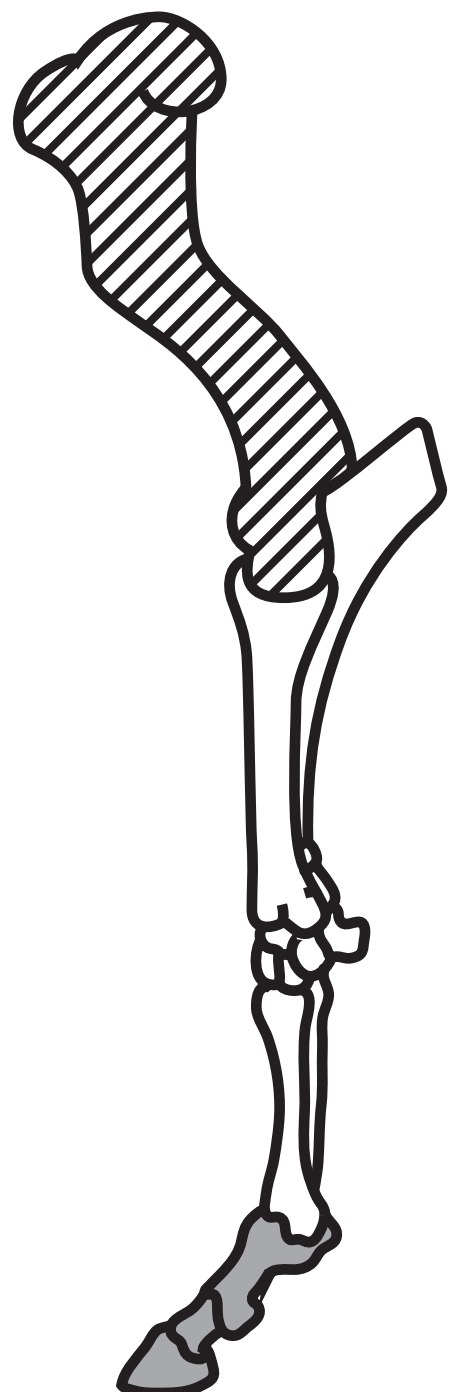
whale



human



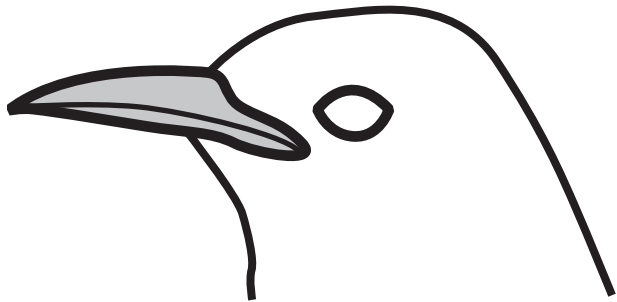
horse



Question 3(c)

FIGURE 6

Species A



Species B

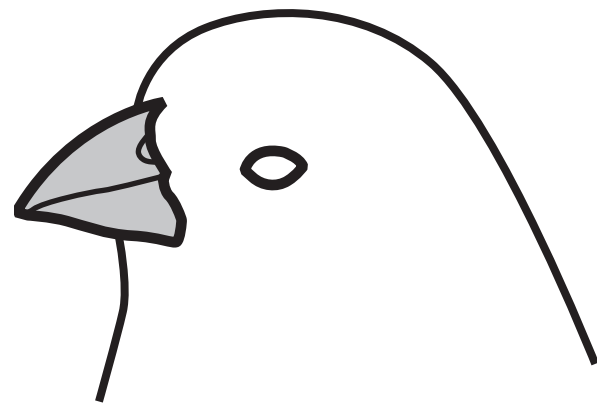
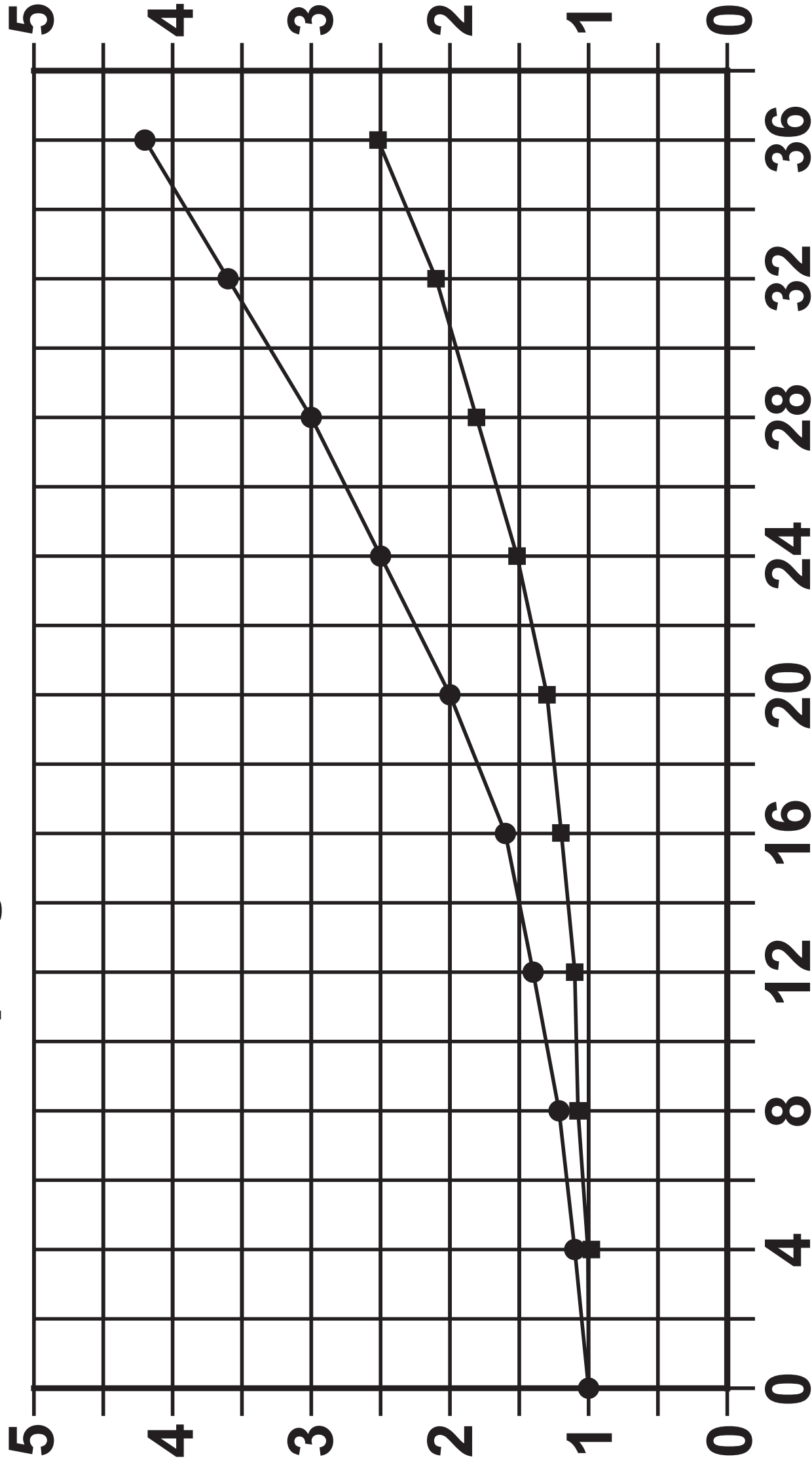


FIGURE 7

Key

- drinks alcohol on its own
- drinks alcohol with meals

Relative risk of developing cirrhosis of the liver



Number of units of alcohol consumed per week

Question 4(c)

FIGURE 8

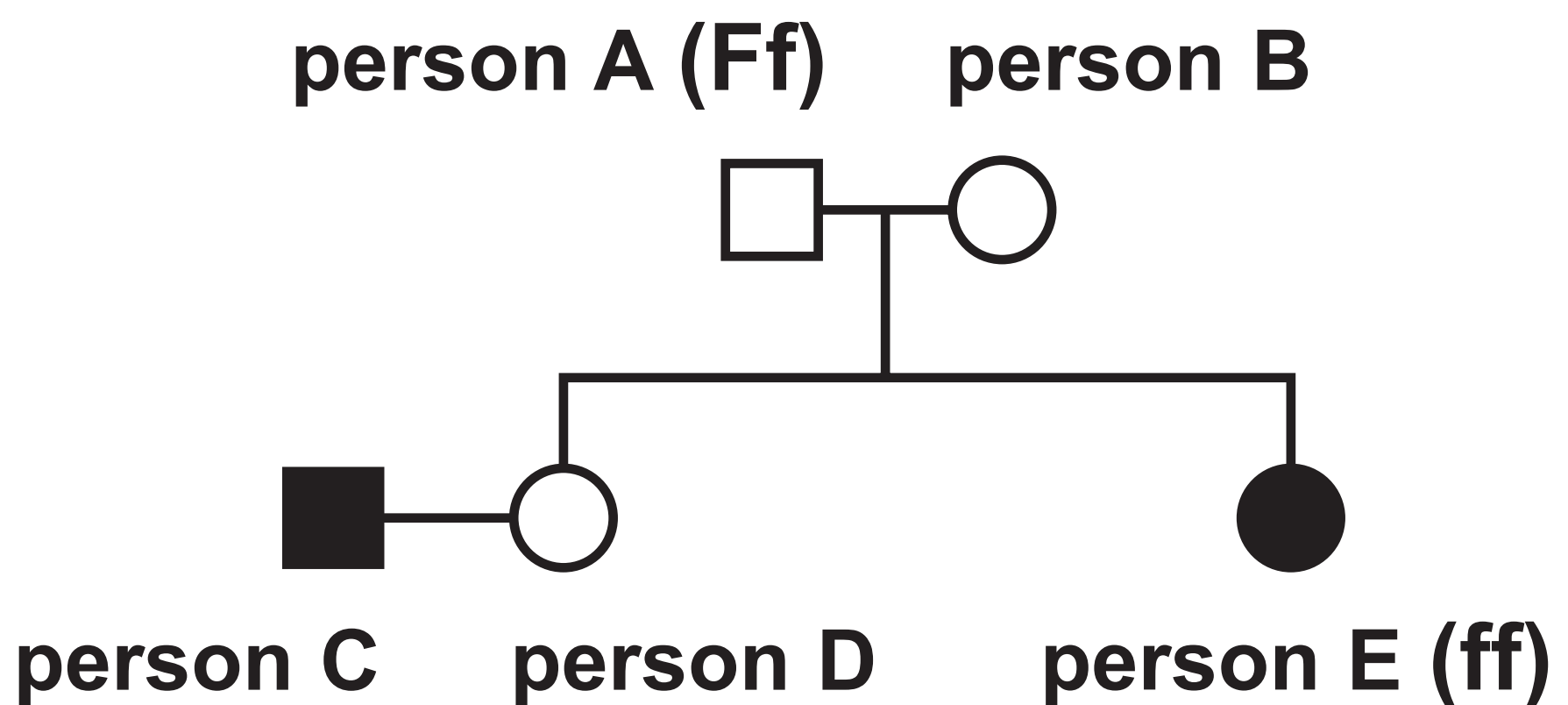
Key

○ female without cystic fibrosis

● female with cystic fibrosis

□ male without cystic fibrosis

■ male with cystic fibrosis



Question 5(a)

FIGURE 9



Question 5(b)

FIGURE 10

Temperature in °C	Number of plantlets produced
5	0
10	0
15	2
20	12
25	8
30	0

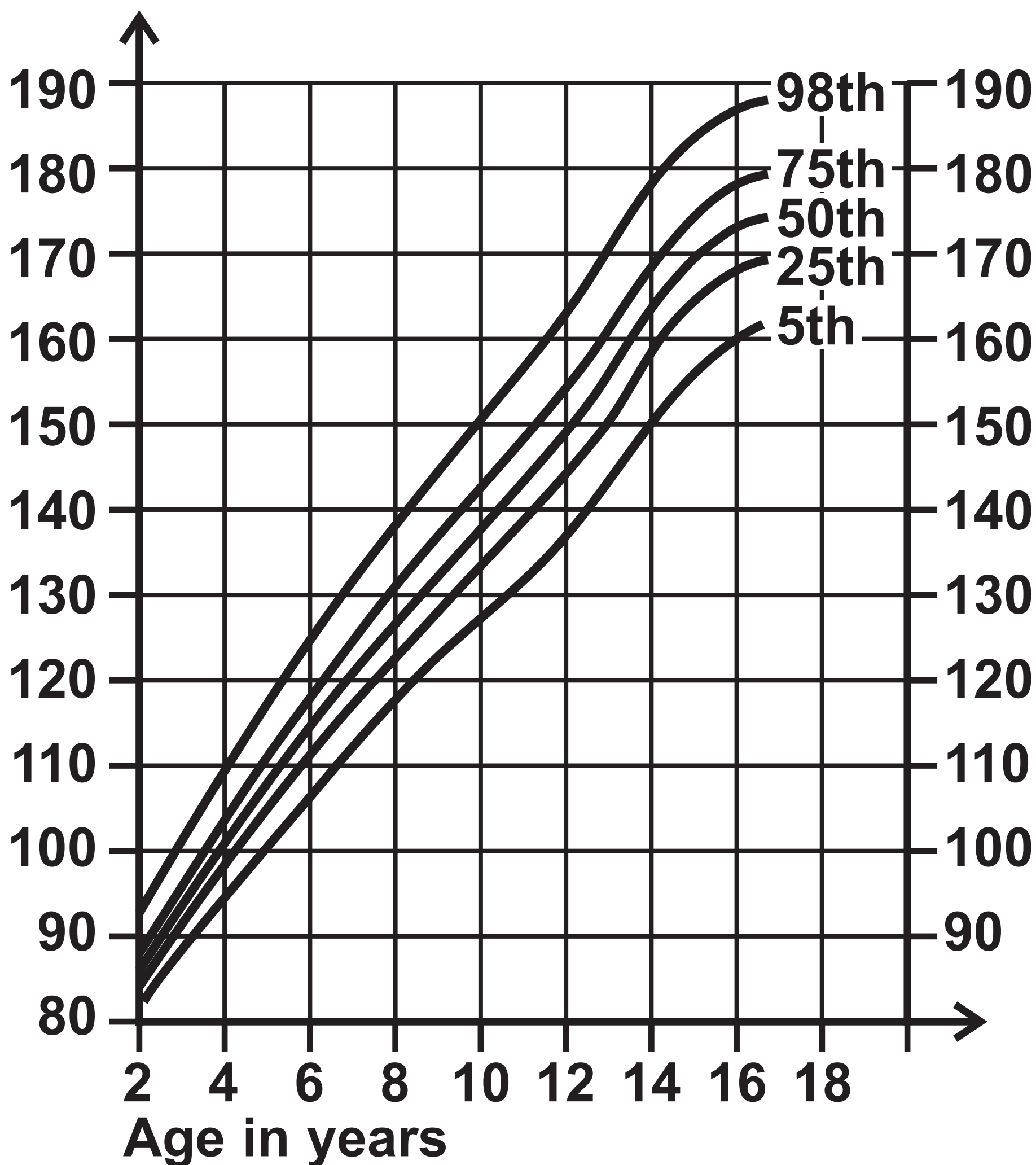
FIGURE 11

characteristic	plant K	plant L	plant M
size of leaves	small	large	small
striped leaves	none	none	green and white
flowers	small white	large white	large pink

Question 6(a)

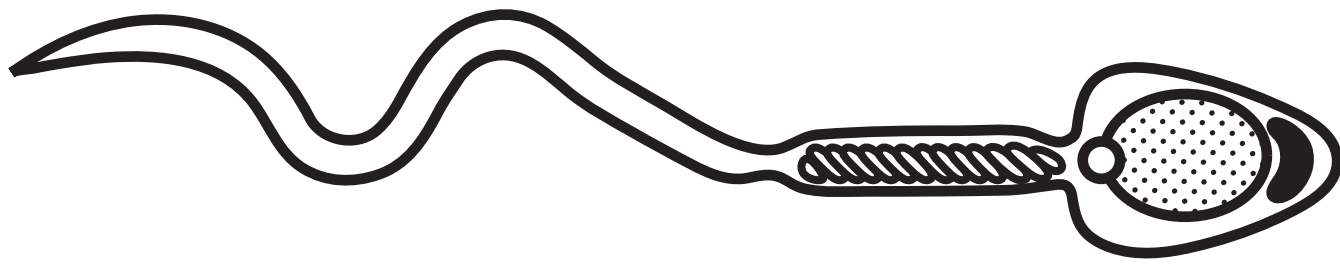
FIGURE 12

Height in cm



Question 6(b)(i)

FIGURE 13



Question 6(b)(ii)

TABLE 1

	mitosis	meiosis
number of daughter cells produced		
number of chromosomes in each daughter cell		

Question 6(b)(ii)

TABLE 1

	mitosis	meiosis
number of daughter cells produced		
number of chromosomes in each daughter cell		

21

Question 7

FIGURE 14

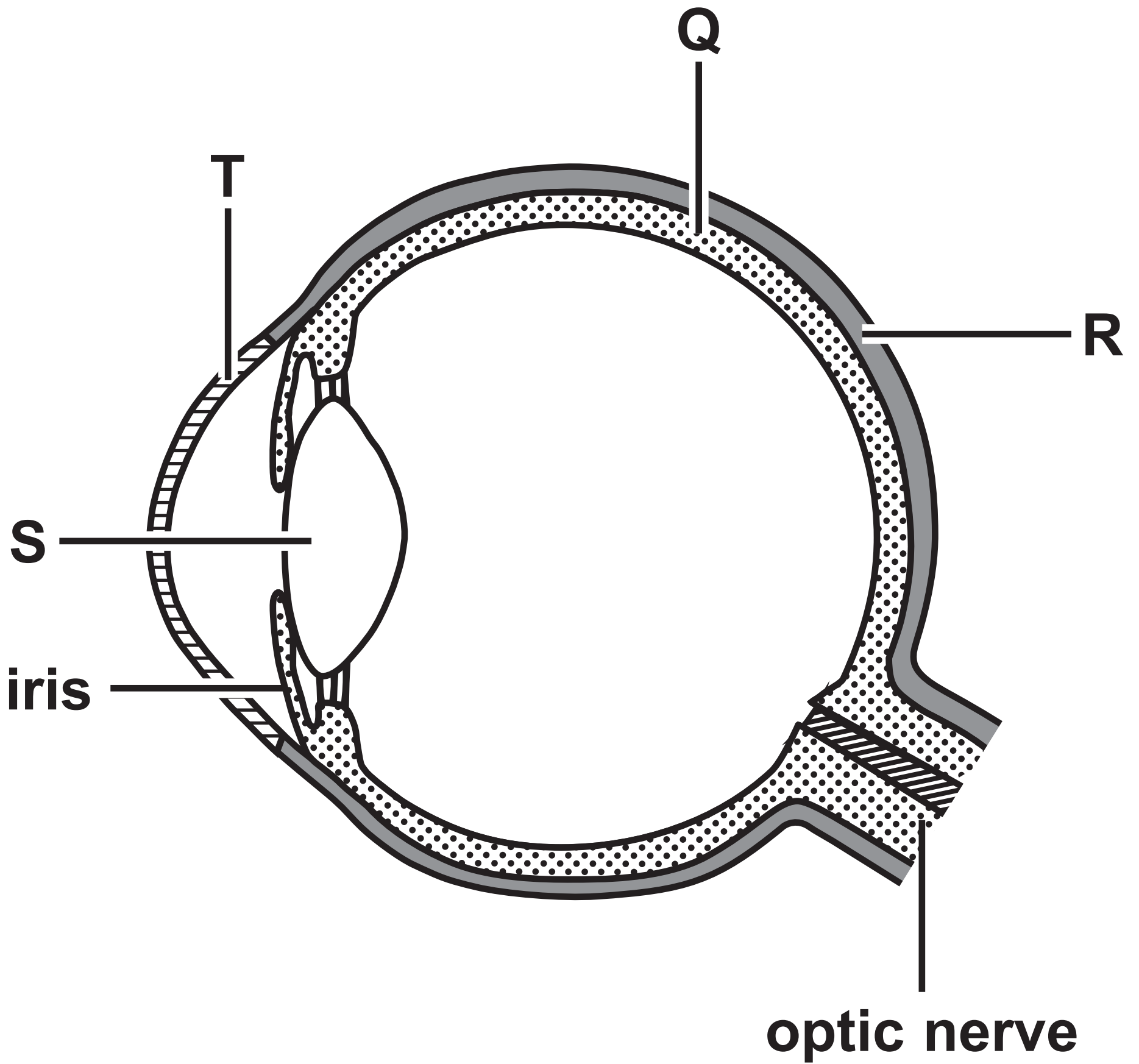


FIGURE 15

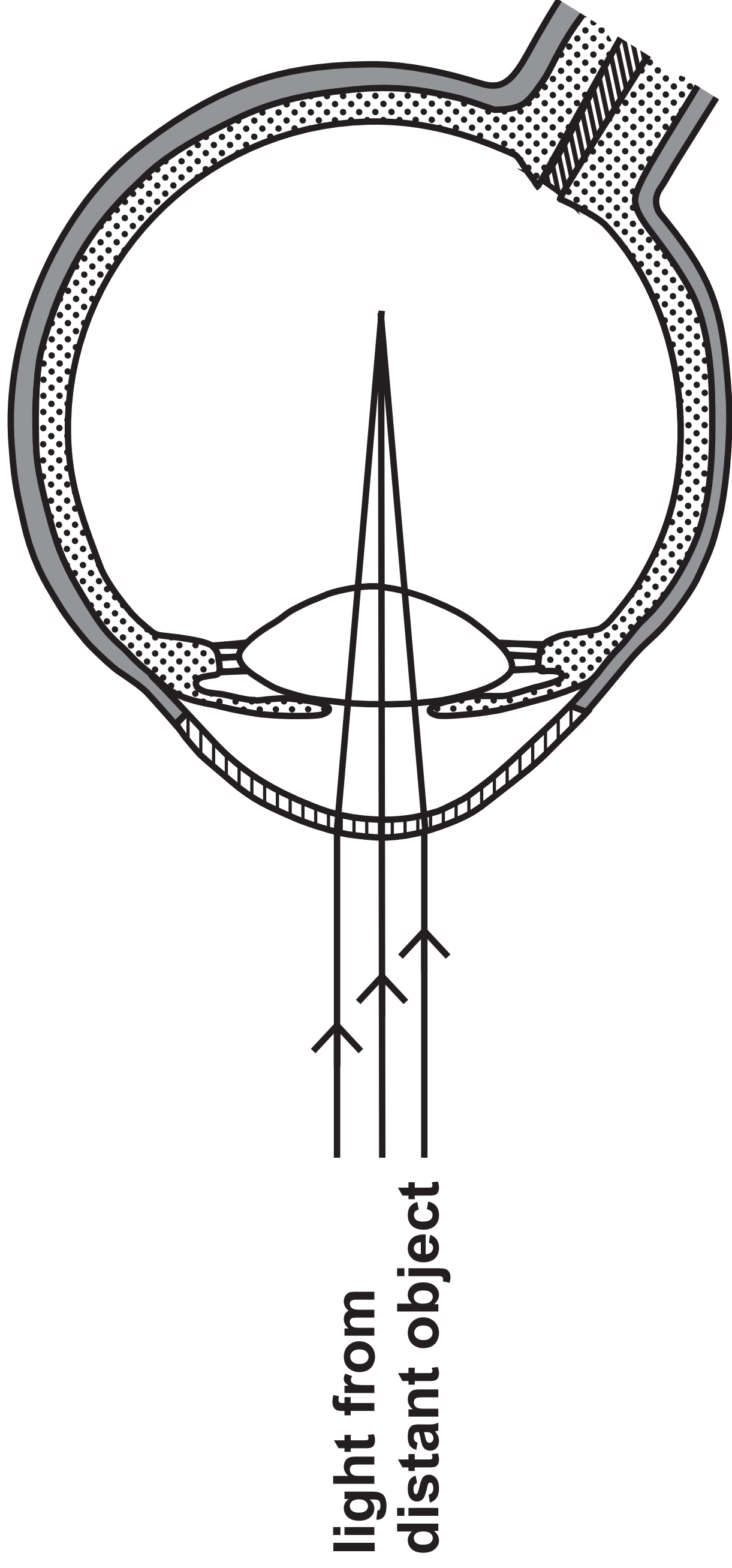


FIGURE 16

T	T	G	A	T	T	G	C	G	T	A	A
---	---	---	---	---	---	---	---	---	---	---	---

[illegible]

Question 8(b)

FIGURE 16

T	T	G	A	T	T	G	C	G	T	A	A
---	---	---	---	---	---	---	---	---	---	---	---

[illegible]

Question 9(a)

FIGURE 17

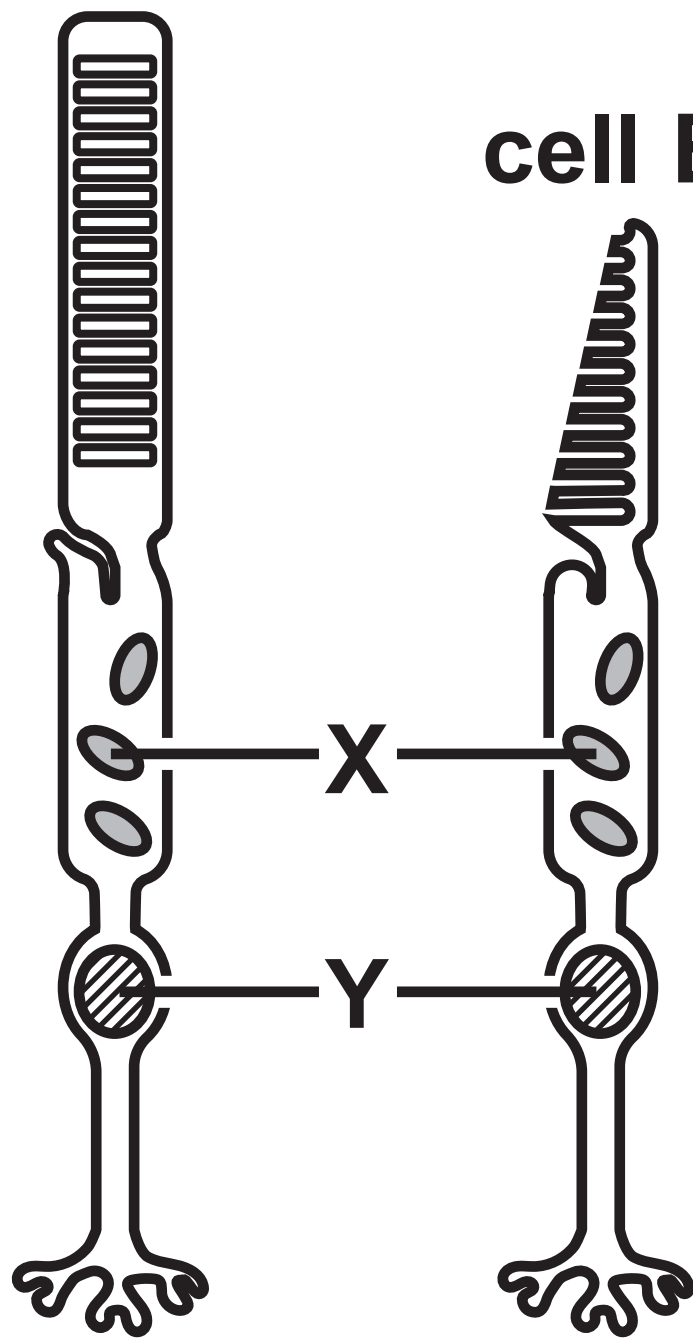
sexually transmitted infection (STI)	number of people diagnosed per 1000 of the population
chlamydia	3·7
gonorrhoea	0·8
genital herpes	0·6
genital warts	1·1
syphilis	0·1

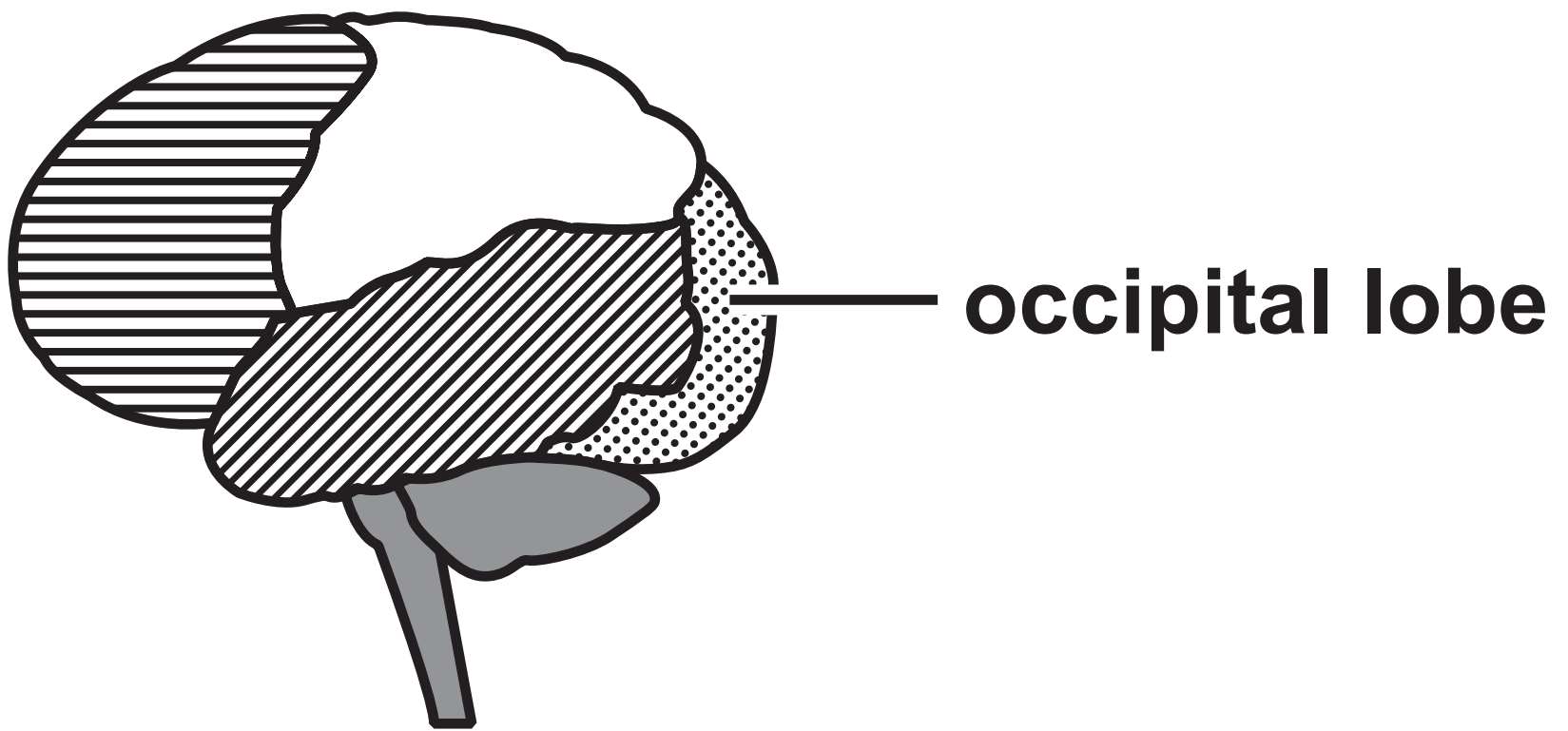
Question 10(a)

FIGURE 18

cell A

cell B



Question 10(b)(ii)**FIGURE 19**

Question 3(c)

(Source: © Kristel Segeren/Shutterstock)

**(Source: © Maurizio De Mattei/
Shutterstock)**

Question 10(a)

(Source: © Kokhanchikov/Shutterstock)

Question 10(b)(ii)

(Source: © Magic mine/Shutterstock)